



LEAGUE OF WOMEN VOTERS OF THE RIPON AREA

BULLETIN



P.O. BOX 5 | RIPON, WI 54971
lwvriponarea@gmail.com



<http://riponarea.wi.lwvnet.org>



"LEAGUE OF WOMEN VOTERS OF THE RIPON AREA"
<https://www.facebook.com/LWVRiponWIArea/>

PRESIDENT'S MESSAGE

Ripon Area Leaguers,

With the State Spring Election rapidly approaching on Tuesday, April 4, I hope you're feeling proud of our well-run and attended Voter Service activities related to the Ripon School Board candidates. In the future I hope we'll have opportunities to conduct similar events in other area communities.

Please note that **we are cancelling our April 6th meeting**. The Calendar Planning Committee will schedule a meeting in the upcoming year that will focus on National League's CAMPAIGN FOR MAKING DEMOCRACY WORK.

You'll notice this Bulletin has important information that we'll address and bring to a vote at the **Annual Meeting on Saturday, May 13th**. Please review the following proposals: Ripon League 2017-2018 Budget; the Ripon League Bylaw changes; the 2016 Annual Meeting minutes; the "new" 2-year local Poverty Study Scope; and our Nominating Committee Report that lists a slate of officer and director candidates for the next two years.

ANNUAL MEETING- Mark your calendars to meet in the Community Room at Ripon High School on May 13th at 11:30am for great conversation, an excellent meal catered by J's Barbecue, a review of our past year, and a welcome to many new members!

Further details regarding cost and speaker coming soon.

Please check for additional updates regarding recent LWV Board decisions in this Bulletin.

Cindy Diemer
LWV-Ripon Area
First Vice-President/Acting President

Mark Your Calendar

TUE
APR
4

2017
SPRING
ELECTION



FRI
APR
7

**Joint Finance Committee
Budget Public Hearing**
[@ Berlin HS Auditorium;
10:00 AM -5:00 PM]

MON
APR
10

**Budget Listening Session
w/ Rep. Joan Ballweg**
[@ Ripon College;
4:00-5:00PM]

MON
APR
24

**Local Poverty Study
Committee Meeting**
[@ Liz Ringstad's Home;
7:00 PM]

SAT
MAY
13

LWV ANNUAL MEETING
[@ RHS Community Room;
11:30 AM]

Please see our [Online Calendar](#) or [Facebook Page](#) for updates, cancellations and other changes!

In This Bulletin

| | |
|--|----------|
| President's Message..... | 1 |
| In Case You Missed It..... | 2 |
| Poverty Study Committee..... | 3 |
| Introduction to the Study Process..... | 3 |
| United Way's ALICE..... | 3 |
| JFC Public Budget Hearing..... | 4 |
| Upcoming..... | 4 |
| Voter Service..... | 5 |
| Voter Fraud (LWV-WI)..... | 5 |
| Membership..... | 6 |
| Ask a Member..... | 6 |
| ANNUAL MEETING PROPOSALS & REPORTS... | 7 |
| Contacts and Committees..... | 10 |
| Sources..... | 10 |

IN CASE YOU MISSED IT

Ellen Rosborough

**MARCH 9, 2017
RIPON, WI**

Our league was happy to host guest speaker, Ellen Rosborough, in March. Rosborough shared insight and information about the LWV Upper Mississippi River Region Inter League Organization.



Ellen Rosborough is a founding Board Member of the LWV UMRR ILO.

The LWV UMRR ILO is a regional organization linking more than 50 local LWV Leagues and four state LWV Leagues in protection of the Upper Mississippi River.

Rosborough noted that because this shared expanse of water and its watershed affects so many people, it is truly a collaborative effort. This is an issue that not only unites LWV groups across county and state lines but groups beyond our League as well. Fisherman, for example, are deeply invested in maintaining safe and clean bodies of water.

The LWV plays a vital role in this collaboration because of its extensive experience with turning local studies into actionable legislative advocacy.

Rosborough invited members in attendance to play "The

Watershed Game" which was designed as an educational tool. The game highlights the various strategies currently used to maintain healthy watersheds. The game also underscores the fact that a healthy watershed requires every entity within that watershed (from farmers, foresters, industrial parks and even families living in the cities and the suburbs!) to participate in strategic maintenance efforts.

Our league was excited to hear that the LWV UMRR ILO has a version of the game for school children. The best advocacy begins with education.



LWV Members try to improve their assigned sections of the watershed map with strategic investments.

Learn more about the LWV UMRR ILO and their advocacy efforts on Facebook:

<https://www.facebook.com/LWVUMRRIO/>



Want to learn more about Watersheds? Check out the DNR website:

<http://dnr.wi.gov/topic/Watersheds/>

Candidate Forum

**MARCH 23, 2017
RIPON, WI**

Thank you to all who helped out and/or attended the second half of the Ripon Area School Board candidate sessions! Despite competing with other local goings-on the Candidate Forum was a well attended event.



Ellen Sorensen served as moderator for the second School Board Candidate event hosted by the Voter Service Committee.

The Voter Service committee invited all six candidates on the Spring Election ballot to participate in the forum. Four candidates participated and answered questions from the community.

The LWV provides a set of guidelines to ensure that our forums are educational and remain fair and civil. As such, audience members submit written questions which are screened before being presented to the forum moderator.

League member Ellen Sorensen graciously agreed to moderate our forum once again. Sorensen was pleased to report that those in attendance had many questions for the candidates.

POVERTY STUDY COMMITTEE

The Poverty Study Committee welcomed two new members on March 27th at Liz Ringstad's house. Jolene Schatzinger and Roberta Martin are our newest committee members!

We've switched our afternoon meeting time to Monday nights at 7:00pm in order to have a more convenient time for those of you working days. If you've considered or are considering joining the committee, please contact Cindy Diemer (920-527-1931) or Jean Johnson (920-748-6699). We can easily review the first study and explain the focus of the new study.

We'll study four topics that were strongly supported by members at the December Gala – **Housing, Health Care, Food Security/Food Deserts, and Transportation**. The study will emphasize how the topics and solutions are interconnected. Emphasis will be placed on Rural Poverty in our broad Ripon area.

Committee Members – Linda Holloway, Jean Johnson, Roberta Martin, Liz Ringstad, Lelani Sanchez, Roberta Martin, and Jolene Schatzinger.

Cindy Diemer
LWV-Ripon Area
Poverty Study Chair

INTRODUCTION TO THE STUDY PROCESS

"Studies are part of League Program and, in League parlance, League Program includes all of the positions the League uses to affect public policy as well as the procedure for adopting these programs. Program is such an integral part of the League that, according to League Basics, "Program is the League's reason for being."

Program has three parts: 1) selection of an issue, 2) study of that issue, consensus and formulating a position, and 3) use of that position to influence public policy. All LWVUS positions are included in the League publication, *Impact on Issues, 2012-2014: A Guide to Public Policy Positions*, <http://www.lwv.org/content/impact-issues>.

The purpose of a study, at any level, is to educate members so that they can be informed participants in consensus and provide the necessary data for formulating the ultimate position."

Read more at:

<http://lwv.org/content/introduction-study-process-o>

For Citations, see "SOURCES" on Page 10.



POVERTY STUDY RESOURCE: UNITED WAY'S STUDY OF FINANCIAL HARDSHIP **ALICE**

ALICE®

ASSET LIMITED, INCOME CONSTRAINED, EMPLOYED



United Way

"ALICE, a United Way acronym which stands for Asset Limited, Income Constrained, Employed, represents the growing number of individuals and families who are **working, but are unable to afford the basic necessities of housing, food, child care, health care, and transportation.**

Through a series of new, standardized measurements, United Way is quantifying the size of the workforce in each state that is struggling financially, and the reasons why. These measurements provide a broader picture of financial insecurity than traditional federal poverty guidelines."

To find out more about ALICE and to read their report on Wisconsin (including data breakdowns by county) go to:

<http://www.unitedwayalice.org/>



For Citations, see "SOURCES" on Page 10.

**Joint Finance Committee
PUBLIC BUDGET
HEARING**


**Friday, 7 APRIL 2017,
10AM-5PM Berlin HS**



State Senator Alberta Darling (R-River Hills) and State Representative John Nygren (R-Marinette), the Co-Chairs of the budget-writing Joint Finance Committee, released the following statement outlining the timeline for statewide public hearings on the 2017-19 State Budget:

"Every budget cycle, the Joint Finance Committee travels the state to hold several public hearings on the state budget. Our goal is to hear from as many Wisconsinites as possible about how we can improve upon the governor's budget recommendations and continue to prioritize what's important to Wisconsin residents."

Andrea Kaminski, Executive Director of LWV-WI, urges all interested LWV members to attend and testify. LWV-WI offers resource documents on the following issues:

-  **WISCONSIN ELECTIONS COMMISSION**
-  **TRANSPORTATION**
-  **EDUCATION**
-  **JUDICIAL COMMISSION & PAROLE COMMISSION**

For Citations, see "SOURCES" on Page 10.

UPCOMING

GOVERNMENT: Joint Finance Committee

| | |
|-------|--|
| WHAT | Joint Finance Committee Budget: Public Hearing |
| WHEN | 7 April 2017 (FRI) 10:00 AM -5:00 PM |
| WHERE | Berlin HS Auditorium, BERLIN |

For more locations and dates: <http://legis.wisconsin.gov/senate/08/darling/news/press-releases/2017-03-16/>

These hearings are open to the public, whether you want to testify or just watch the process. You may need to get there early and be prepared to wait. Times and other rules, including speaking limits, can be found here: <http://legis.wisconsin.gov/Pages/CG/testify.aspx>.

GOVERNMENT: Ballweg Listening Session

| | |
|-------|---|
| WHAT | Budget Listening Session w/ Rep. Joan Ballweg |
| WHEN | 10 April 2017 (MON) 4:00 - 5:00PM |
| WHERE | Todd Wehr 104 , Ripon College, RIPON |

"Representative Ballweg encourages all residents of the 41st Assembly District to attend a listening session. If you are unable to attend, your thoughts and opinions can be shared by contacting Rep. Ballweg's Capitol office. Please call toll free (888) 534-0041, email Joan at Rep.Ballweg@legis.wi.gov, or write to her at 210 North, State Capitol, P.O. Box 8952, Madison, WI 53708."

<https://www.wispolitics.com/2017/rep-ballweg-announces-spring-listening-sessions/>

WEBINAR: Poverty in Rural America

| | |
|-------|---|
| WHAT | Poverty Webinar |
| WHEN | 12 April 2017 (WED) -- 1:00-2:00PM |
| WHERE | ONLINE http://www.irp.wisc.edu/publications/media/webinars.htm |



"The Institute for Research on Poverty presents a Poverty Webinar: "Economic Disadvantage in Rural America" Featuring Brian Thiede, Assistant Professor of Rural Sociology and Sociology, Penn State University. Rural and small-town America has been slower to recover from the Great Recession than U.S. metropolitan areas. This webinar explores the general economic context in which rural Americans are embedded, with a focus on poverty and underemployment. It traces trends over recent decades, and explores possible causes (and solutions) to economic disadvantage in the rural United States."

For more information and to register:
<http://irpwisc.formstack.com/forms/ruralpoverty>

LOCAL LWV: Annual Meeting

| | |
|-------|----------------------------------|
| WHAT | LWV of Ripon Area Annual Meeting |
| WHEN | 13 MAY 2017 (SAT) -- 11:30 AM |
| WHERE | RHS Community Room, RIPON |

Please, mark your calendar for our Annual Meeting. Local favorite, J's BBQ, will cater our luncheon! You will find "Annual Meeting Edition: Proposals and Reports" in this bulletin.

LWV-WI VOTING FRAUD: 17 YEAR OLD VOTERS

“Andrea Kaminski, executive director of Wisconsin’s League of Women Voters chapter, told the [WEC] commission she was “distressed” to read about the 17-year-olds voting, saying voters and poll workers need to be better educated about voting laws.”

Voter fraud charges possible for underage Dane County teens who voted illegally

by MARK SOMMERHAUSER
Wisconsin State Journal



Terri Pederson, Daily Citizen

Official: Sanders Shares Blame for Minors Voting in Primary

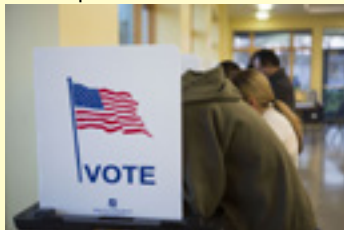
by Todd Richmond
US News



Manuel Balce Ceneta, THE ASSOCIATED PRESS

Erin Grunze and Andrea Kaminski: Underage voting shows need to invest in voter education

by Erin Grunze & Andrea Kaminski
The Cap Times



Saiyna Bashir, CAPITAL TIMES

For Citations, see “SOURCES” on Page 10.

VOTER SERVICE

The LWV of the Ripon Area hosted a Candidate Forum on March 23, 2017. The Forum was held at Ripon City Hall began at 7:00 pm. Four of the six candidates for the Ripon School Board participated.

This forum had a more traditional format. Candidates drew for position, had two minutes for opening remarks and two minutes each to answer screened questions from the audience. Candidates had one minute for closing remarks. Leaguers counted about 50 audience members. The forum was taped and will replay on the local Ripon Cable Access channel up until the April 4th General Election.



Four Ripon Area School Board candidates attended the March 23rd Candidate Forum and answered audience questions.

Thank you to the many League members who participated in the forum to ensure a successful event.

Ellen Sorensen
Voter Service Chair



The Wisconsin Election Commission recently reported that 17-year-olds illegally voted in the 2016 Presidential Primary. Read the WEC report in full:

Commission Report to Legislators

http://elections.wi.gov/sites/default/files/event/261/tuesday_march_14_2017_complete_meeting_materials__23379.pdf



On Election Night,
state law requires
Wisconsin’s
72 County Clerks
to publish unofficial
election results.

PREPARE
FOR THE POLLS
<https://myvote.wi.gov/>

SEE ELECTION
RESULTS
<http://elections.wi.gov/>

MEMBERSHIP

League membership is growing rapidly. As a result we are looking for additional League mentors as well as volunteers to do brief introductory interviews with new and/or returning members.

If you have some time to spare and are interested in assisting the membership committee please contact Ellen Sorensen at eclairtogo@gmail.com or Cindy Diemer at cindydiemer4@gmail.com.

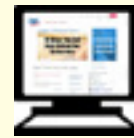
Ellen Sorensen
LWV-Ripon Area
Membership Chair

STAY UP TO DATE ON STATE AND
NATIONAL LWV NEWS & EVENTS



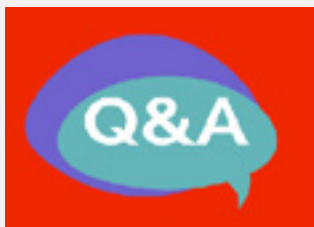
League of Women
Voters of Wisconsin

lwvwi.org



League of Women
Voters of the US

lwv.org



ASK A
MEMBER:

Liz Ringstad

Elizabeth Ringstad is one of the founding members of the League of Women Voters in the Ripon Area. She has faithfully served the League in various forms: President, Board Member, and Chair of numerous studies & committees. Liz is still very active in the local LWV, and she continues to be an admirable example of civic involvement and advocacy.

WHAT IS RIPON'S HISTORIC CONNECTION TO THE LEAGUE OF WOMEN VOTERS?

Carrie Chapman Catt, the founder and first President of the League of Women Voters was born in Ripon, Wisconsin. She was a Suffragist, not a Suffragette ("Suffragette" is a British term).

WHEN WAS THE RIPON AREA LWV FOUNDED?

The League of Women Voters of the Ripon Area was founded over 50 years ago. In the spring or summer of 1960 a group of women started coming together to talk about their need to be a part of a non-partisan group that believed in informed and active participation in government. In 1921 a Ripon League had quickly organized following the 1920 passage of the 19th Amendment to the US Constitution which granted American women the right to vote. The first League lasted about 10 years then disbanded due to low membership. The early 1960s group again wanted a chance to be better informed and be active citizens in a non-partisan group that allowed them to study and come to consensus on local, state and national issues, even international issues. Examples at that time included the UN, UNICEF. Now international law still applies regarding Canadian pipelines, infrastructure, highways, railroads and the environment.

WHY HAVE YOU CONTINUED TO BE AN ACTIVE LEAGUE MEMBER?

Sometimes you think nothing will come of our studies. But years later it may come forward to make a difference.



ANNUAL MEETING PROPOSALS AND REPORTS

In accordance with LWV bylaws and in preparation for the LWV of the Ripon Area Annual Meeting, we present the following proposals and reports. These reports will also be available in the Annual Meeting Booklet which every member will receive.

NOMINATING COMMITTEE: PROPOSED APPOINTMENTS

The following is the report of the nominating committee for the slate for the annual meeting:

| | |
|------------------------------|--|
| PRESIDENT: | Cindy Diemer 2017-2019 |
| VICE PRESIDENT: | Ellen Sorensen 2017-2019 |
| SECRETARY: | Mary Avery 2017-2019 |
| DIRECTOR: | Jonathan Gatzke 2017-2019 |
| NOMINATING COMMITTEE: | Art Baseler and Mary Fillion-Zuelsdorf 2017-2018 |

NOMINATING COMMITTEE 2016-2017: Liz Ringstad, Lois Ellis, and Sandy Scamehorn

**Sandy Scamehorn
Nominating Committee**

POVERTY STUDY COMMITTEE: PROPOSED SCOPE

Local Poverty Study – Phase 2 Proposed Scope 2017-2019

The League of Women Voters of the Ripon Area's Study of Rural Poverty will launch a new two-year phase of the Study with an emphasis on four interconnected topics including **Transportation, Health Care, Housing, and Food Security/Food Deserts.**

The Study will continue its focus on three close geographic areas including the counties of Green Lake, Waushara and western Fond du Lac.

The study will continue to identify current and potential solutions of the four topics.

**Cindy Diemer
Poverty Study Committee**

TREASURER REPORT: PROPOSED BUDGET

League of Women Voters of the Ripon Area Proposed 2017-2018 Budget

Please refer to the attached Proposed Budget of the coming fiscal year, July 1, 2017 through June 30, 2018.

Actual financial information has been provided for the 2014-2015 and 2015-2016 fiscal years. For the 2016-2017 fiscal year the annual budget has been provided along with actual financial performance through the first 9 months of the year (March 29, 2017). This information gives an indication of what the League's income and expenses have been in prior years and helps determine the budget line items for this coming year.

League Income:

LWV of the Ripon Area Dues are based on our current membership of 35 with 8 being second members of a household. Proposed Dues of \$60 for the primary household members and \$30 for second members of the household are proposed to stay the same as last year. This level of dues almost covers the Leagues responsibilities to the National League (\$32/\$16) and State League (\$30/\$15) and seems reasonable given the other revenues and donations we receive during the year.

Contributions from members and the general public represent another major source of revenue. Our annual fund drive has varied in its success from year to year and includes donations received in response to a letter sent to members, the general public and area businesses. Donations made at the annual Gala are included in the Fund Drive total. We do receive donations at other times of the year and these are included in Member and Non-member Contributions.

Election Night Reporting generates \$250 per election cycle. Last year there were two cycles, so we earned \$500. The coming year only includes one cycle. Occasionally, the League receives Grants and Memorials.

Event Income (Gala and Annual Meeting) is almost directly offset by the expense for the associated meals. We have tried to make a little on each event but are consciously trying to provide a reasonably priced event to our members and their guests.

League Expenses:

Administrative expenses include the cost of our Website, the Post Office Box and general operating expenses including postage, paper, ink, printing, and committee expenses. These have historically been fairly stable.

Expenses related to Delegates/Meetings cover the cost of our local meetings including the Annual Meeting, Gala and monthly presentations. Every other year (the even years), League sends a representative to the National League Convention, covering the cost of the event, transportation, housing and meals. We continue to budget \$600 per year to cover these expenses. Annually, two representatives from our league attend the State Annual Meeting and we budget to cover their costs of attending. In past years, we have been actively involved with the Lake Michigan Inter-LWV and have budgeted to cover the cost for our representative to attend their annual meeting. At the March 2017 Board Meeting, we voted to join the Upper Mississippi Region Inter-LWV and have budgeted funds so that a representative can attend their annual meeting.

LWV Member Organizations include State, National and the two regional Leagues mentioned above. Our cost for belonging to State and National League is based the size of our membership times the National League (\$32/\$16) and State League (\$30/\$15) dues structure. The annual dues for the two regional Leagues are \$25 per year. We are proposing to provide an additional contribution of \$25 to each of the regional leagues to help support their activities.

Educational Activities, which include Publications, Programs, Member Outreach, Voter Services, and Position Support have historically been provided at no cost to the League out of the generosity of League members. Occasionally, there have been costs related to outside speakers, their meals and travel, which are budgeted for in this section.

Overall, the Proposed Budget for the 2017-2018 Fiscal Year has been developed based on actual income and expenses that could be defined and where that was not possible on the League's past experience. Going forward, it will be important to improve our fund raising performance in order to help support the League's increased involvement on a regional, state and national level and our efforts in Voters Services and the studies of poverty and water issues in our area.

Respectfully submitted,

Rich Diemer
Treasurer

TREASURER REPORT: PROPOSED BUDGET SPREADSHEET

| League of Women Voters of the Ripon Area Budget for 2016-2017 League Fiscal Year | | | | | | |
|---|---|---------------------|---------------------|-----------------------|---------------------|-----------------------|
| | | Actual 2014-2015 | Actual 2015-2016 | Budgeted 2016-2017 | Actual 7/16-3/17 | Proposed 2017-2018 |
| Checking Balance | | \$3,685.52 | \$4,802.45 | \$4,206.39 | \$5,882.09 | \$5,449.93 |
| Education Fund Balance | | \$62.87 | \$62.87 | \$62.87 | \$62.87 | \$62.87 |
| Current/Forward Balance | Total assets on hand | \$3,747.59 | \$4,864.52 | \$4,258.46 | \$5,944.16 | \$5,512.00 |
| Income (YTD: March 31, 2016) | | | | | | |
| Dues (\$44/908) | 35 newbies, 0 in households | \$1,706.00 | \$1,208.00 | \$1,028.00 | \$805.00 | \$1,928.00 |
| CONTRIBUTIONS: * | | | | | | |
| *Member Contributions | | \$411.50 | \$400.00 | \$398.00 | \$358.00 | \$398.00 |
| *Nonmember Contributions | | \$120.00 | \$0.00 | \$200.00 | \$0.00 | \$200.00 |
| Events | | \$0.00 | \$0.00 | \$0.00 | \$0.00 | \$0.00 |
| Finance Drive | | \$832.30 | \$1,023.00 | \$1,000.00 | \$723.00 | \$1,000.00 |
| Event Income | | \$0.00 | \$1,000.00 | \$1,000.00 | \$0.00 | \$1,000.00 |
| Election Reporting | | \$500.00 | \$250.00 | \$500.00 | \$250.00 | \$250.00 |
| Other Income | Mary Alice Lindt - Memorial | \$0.00 | \$100.00 | \$0.00 | \$0.00 | \$0.00 |
| Total Income | | \$4,478.00 | \$4,398.00 | \$4,628.00 | \$2,786.00 | \$4,678.00 |
| Expenses (YTD: March 31, 2016) | | | | | | |
| Website | | \$200.00 | \$200.00 | \$200.00 | \$200.00 | \$200.00 |
| R.O. Bus | | \$58.00 | \$58.00 | \$58.00 | \$58.00 | \$58.00 |
| Operating Costs | Bulletin, postage, printing, committee expenses, etc. | \$0.00 | \$141.31 | \$150.00 | \$121.31 | \$150.00 |
| DELEGATES, MEETINGS: * | | | | | | |
| *Local Gals & Annual Meeting | Print material, food, etc. | \$860.86 | \$640.00 | \$600.00 | \$775.00 | \$600.00 |
| *State Annual Meeting | | \$42.00 | \$0.00 | \$350.00 | \$0.00 | \$350.00 |
| *National Convention | Occurs in even yrs. | \$432.38 | \$0.00 | \$600.00 | \$0.00 | \$600.00 |
| *Lake Michigan Inter-LWV | | \$0.00 | \$0.00 | \$150.00 | \$0.00 | \$150.00 |
| *Upper Mississippi Region Inter-LWV | | \$0.00 | \$0.00 | \$0.00 | \$0.00 | \$100.00 |
| *LWV Workshops | | \$47.00 | \$0.00 | \$50.00 | \$0.00 | \$50.00 |
| *Other Meetings, not LWV | | \$0.00 | \$0.00 | \$50.00 | \$376.30 | \$50.00 |
| LWV MEMBER ORGS: ** | | | | | | |
| **LWVUS MHP | Based on Jan. 31 membership 23 @ \$32.00 & 6 @ \$15.00 | \$832.00 | \$832.00 | \$837.00 | \$832.00 | \$846.00 |
| **LWV WI PMA | 25 @ \$30.00 & 6 @ \$15.00 | \$825.00 | \$810.00 | \$810.00 | \$780.00 | \$840.00 |
| **Lake Michigan Inter-LWV | | \$25.00 | \$25.00 | \$25.00 | \$25.00 | \$25.00 |
| **Upper Mississippi Region Inter-LWV | | \$0.00 | \$0.00 | \$0.00 | \$0.00 | \$50.00 |
| EDUCATIONAL ACTIVITIES: *** | | | | | | |
| ***Publications, programs | | \$0.00 | \$0.00 | \$50.00 | \$0.00 | \$50.00 |
| ***Program, incl. study cmtes. | | \$0.00 | \$60.00 | \$50.00 | \$50.00 | \$50.00 |
| Member Outreach | | \$0.00 | \$0.00 | \$50.00 | \$0.00 | \$50.00 |
| Voter Service | Voter registrations, Forums | \$0.00 | \$0.00 | \$50.00 | \$0.00 | \$50.00 |
| Position Support | Letters | \$0.00 | \$0.00 | \$50.00 | \$0.00 | \$50.00 |
| Total Expense | | \$3,353.07 | \$3,068.36 | \$4,432.00 | \$3,212.16 | \$4,648.00 |
| Net Income (Income - Expenses) | | \$1,116.93 | \$1,079.64 | \$188.00 | -\$432.16 | \$22.00 |
| Final Balance (+ balance forward & Income, - expenses) | | \$4,864.52 | \$5,944.16 | \$4,546.46 | \$5,512.00 | \$5,534.00 |

BY LAW COMMITTEE: PROPOSED CHANGES

The By Law review committee met to discuss potential changes earlier this year. After review it was determined that changes would be minimal in nature. They include some housekeeping issues and the other change is referencing the National Convention. The language has been made broader to allow for any change in the National League Convention schedule.

The By Law committee consists of: Diane Beres, Cindy Diemer, Sandy Scamehorn and Ellen Sorensen. We respectfully submit these proposed by law revisions for consideration at the May 13th Annual League of Women Voters of the Ripon Area's annual meeting.

Ellen Sorensen
By Law Committee

SOURCES

DNR WATERSHEDS

"Watersheds & basins." Wisconsin Department of Natural Resources, 17 October 2015. <http://dnr.wi.gov/topic/watersheds/> . Accessed 2 April 2017.

ALICE

ALICE. United Way, 2009-2016, <http://www.unitedwayalice.org/> . Accessed 2 April 2017.

INTRODUCTION TO THE STUDY PROCESS

"Introduction to the Study Process." LWV, 2017. <http://lww.org/content/introduction-study-process-0> . Accessed 2 April 2017.

JFC PUBLIC BUDGET HEARING

"JFC Co-Chairs' Announcement Budget Public Hearings." Wisconsin State Legislature, 2017. <http://legis.wisconsin.gov/senate/08/darling/news/press-releases/2017-03-16/> . Accessed 2 April 2017.

"How to Testify at a Public Hearing." Wisconsin State Legislature, 2017. <http://legis.wisconsin.gov/Pages/CG/testify.aspx> . Accessed 2 April 2017.

Kaminski, Andrea "Joint Finance Budget Hearings - white paper attached", received by Cindy Diemer, 31 March 2017.

LWV-WI VOTING FRAUD

Sommerhauser, Mark. "Voter fraud charges possible for underage Dane County teens who voted illegally." Wisconsin State Journal, 15 March 2017, host.madison.com/wsj/news/local/govt-and-politics/voter-fraud-charges-possible-for-three-underage-dane-county-teens/article_95d7a816-0a8e-511f-8bd9-57d3a45fae46.html . Accessed 2 April 2017.

Richmond, Todd. "Official: Sanders Shares Blame for Minors Voting in Primary." US News and World Report, 14 March 2017, <https://www.usnews.com/news/best-states/wisconsin/articles/2017-03-14/chairman-promises-better-training-after-17-year-olds-vote> . Accessed 2 April 2017.

Grunze, Erin & Kaminski, Andrea. "Erin Grunze and Andrea Kaminski: Underage voting shows need to invest in voter education." The Cap Times, 22 March 2017, http://host.madison.com/ct/opinion/column/erin-grunze-and-andrea-kaminski-underage-voting-shows-need-to/article_4fc2e86c-e5dd-5e03-b714-c079cac40aa.html . Accessed 2 April 2017.

WEC: REPORT TO LEGISLATORS

Commission Report to Legislators. Wisconsin Elections Commission, 2017, http://elections.wi.gov/sites/default/files/event/261/tuesday_march_14_2017_complete_meeting_materials__23379.pdf . Accessed 2 April 2017.

BALLWEG LISTENING SESSION

"Rep. Ballweg: Announces spring listening sessions." WISPolitics.com, 2017. <https://www.wispolitics.com/2017/rep-ballweg-announces-spring-listening-sessions/> . Accessed 2 April 2017.

IRP WEBINAR

"IRP Webinar Series." Institute for Research on Poverty. Board of Regents of the University of Wisconsin System, 2016, <http://www.irp.wisc.edu/publications/media/webinars.htm> . Accessed 2 April 2017.

CONTACTS AND COMMITTEES

POVERTY STUDY COMMITTEE

| Name | Phone | E-mail |
|-----------------------------|----------------------------|--|
| Cindy Diemer (Chair) | 920-748-2797 c-527-1931 | cindydiemer4@gmail.com |
| Linda Holloway | 920-597-0749 | linda@wellspringfarm.us |
| Jean Johnson | 920-748- 6699 | jeanjohnson624@gmail.com |
| Roberta Martin | | |
| Liz Ringstad | 920-748-6666 | |
| Lelani Sanchez | 920-931-2815 | lelanisanchez@gmail.com |
| Jolene Schatzinger | | |

VOTER SERVICES COMMITTEE

| Name | Phone | E-mail |
|-----------------------|--------------|--|
| Art Baseler | 920-748-7692 | artbaseler@aim.com |
| Betty Berens | 920-748-6279 | |
| Todd Berens | 920-748-6279 | |
| Liz Ringstad | 920-748-6666 | |
| Ellen Sorensen | 920-960-3397 | eclairtogo@gmail.com |
| Gary Wetzel | 920-748-3280 | garylwetzel@yahoo.com |
| Linda Wilkens | 920-570-2182 | klwilk@charter.net |

LWV OF RIPON AREA BOARD MEMBERS

| Title | Term | Name | Phone | E-mail |
|--|---------|-----------------------|-----------------------------|--|
| President | 2015-17 | Jean Johnson | 920-748- 6699 | jeanjohnson624@gmail.com |
| Acting President First Vice-President | 2015-17 | Cindy Diemer | 920-748-2797 c: 527-1931 | cindydiemer4@gmail.com |
| Vice President | 2016-18 | Cindy Ebert | 920-748- 5994 | fritze@centurytel.net |
| Interim Secretary | 2017 | Art Baseler | 920-748-7692 | artbaseler@aim.com |
| Treasurer | 2016-18 | Rich Diemer | 920-748-2797 | rdiemer@gmail.com |
| Director/Membership Chair | 2015-17 | Ellen Sorensen | 920-960-3397 | eclairtogo@gmail.com |
| Director | 2016-18 | Gary Wetzel | 920-748-3280 | garylwetzel@yahoo.com |
| Director/Webmaster | 2016-18 | Lelani Sanchez | 920-931-2815 | lelanisanchez@gmail.com |

The League of Women Voters is a nonpartisan political organization, with its national office in Washington, DC, and local and state Leagues in all 50 states, the District of Columbia, and the Virgin Islands. Membership to the League of Women Voters of Ripon Area automatically grants Membership to LWV of Wisconsin and LWV of the United States.

